
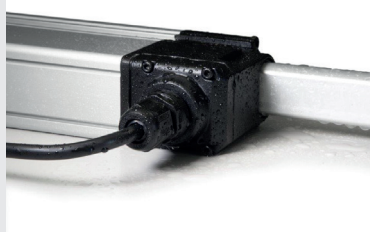


### PRODUCT DESCRIPTION

Linear electric actuator Motorline model MCBS80 with self-aligning tilting movement, complete with support and fitting accessory for top hung windows or sun blades and louvers. Operation at 230V 50Hz, or, as an alternative, at 24V DC. Max. traction and thrust force 800N. Preset for the synchronous operation of two actuators on the same window. Available strokes: 200 - 800 - 1000mm. Worm screw in stainless steel and IP68 protection degree for 200mm stroke. IP65 for 800 and 1000mm strokes. CE marked device.



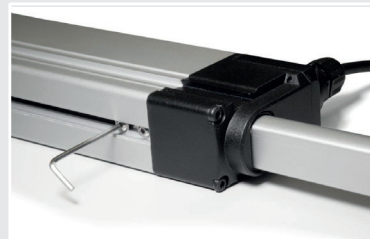
 This product does not support constant power after the course is over, having a limit of 120sec to turn it off after reaching the limit switch.



High degree of protection against dust and water IP68.



Stainless steel drive.



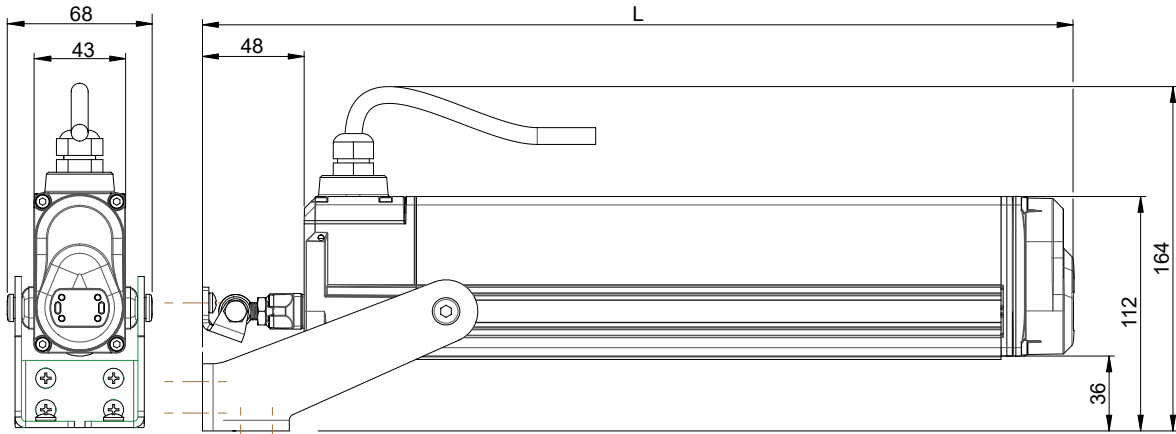
Millimetrically adjustable stroke.



### TECHNICAL SPECIFICATIONS

	MCBS80 230V	MCBS80 24V
Power Supply voltage *	230V ~ 50Hz	24Vdc
Maximum load applicable in thrust	800 N	800 N
Maximum applicable load in traction	800 N	800 N
Stroke	200 - 800 - 1000 mm	
Absorbed current	0,2 A	1 A
Idle translation speed	6,5 mm/s	6,5 mm/s
Duration of the idle stroke	(stroke/idle translation speed)	
Double insulated	Yes	Yes
Service type	S2 de 3 min	S2 de 3 min
Operating temperature	-20°C + 60°C	-20°C + 60°C
Protection class	IP68 (cursos 200-400) IP65 (cursos 600-800-1000)	
Parallel connection	Yes	Yes
Synchronous operation of more motors on the same window	Yes	Yes
Limit Switch	Mechanical / Electronic	Mechanical / Electronic

\* power supply cable not included



Stroke	L
200	411 mm
800	1071 mm
1000	1271 mm

